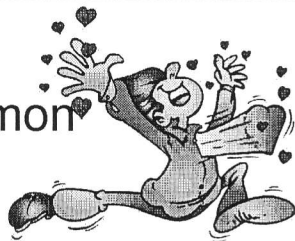


Hoosier
Backgammon
Club

February 2003



A Quiz From A Whiz

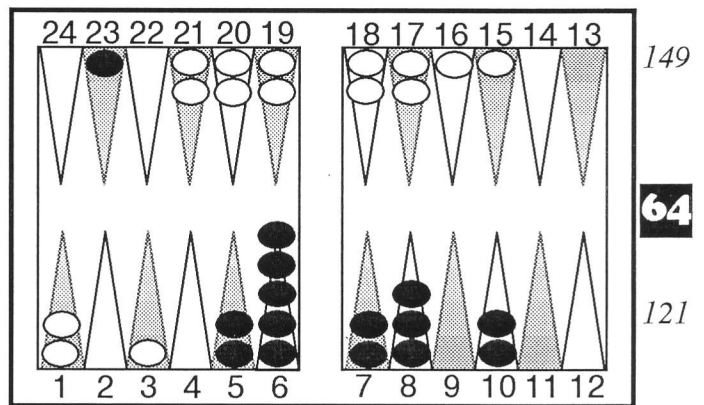
by Jake Jacobs

Early every October, I feel the wheels of my flight bouncing on the tarmac, glance out the window, and discover I am in Japan. (I'm never surprised, as that's where I booked to go.) Just as Labor Day is synonymous with the **Indiana Open**, the second weekend of October equates to the **Japan Open**. Just as you have never been to Japan for the Open, few Japanese players have made it to the **Indiana Open**, or any of the other US tournaments. Yes, you've seen a few, but these are hundreds more, and many are very, very good.

One of the best players you have never seen is a graduate student named **Itikawa Masanori**. That name might not sound familiar, but try this one: Othello. When I first wrote about Othello several years ago he was the highest rated player on Games Grid. Since then he's had three more years to improve his game. Playing as much as he does, Othello has saved and analyzed many backgammon positions. Starting several years ago he collected ten of the most interesting positions, ones where the best play might not be easy or obvious, but where even the second best play was a blunder and offered them as a quiz. Participants in the Japan Open had the entire weekend to read the posted problems, fill out an answer sheet, and submit it. The quiz proved so popular that the **Othello Quiz** has become a regular feature at the **Japan Open**.

Butch is running the complete quiz from the recent Japan Open 2002. Here, to whet your appetite, is a problem from 2000.

Match to 5, Score tied 0 to 0.



Black to Play 3-2?

Answer at bottom of this page.

HBCs 2002 Awards Tournament

Sunday - February 23rd, 2002

Arni's Restaurant (875-7034)
3443 West 86th Street (west of Walmart)

Registration: 12 noon
Awards: 12:30 PM
Play Begins: 12:45 PM

Open Div: \$20 with \$10 Op SPool
Limited Div: \$8
Format: Main-Consolation

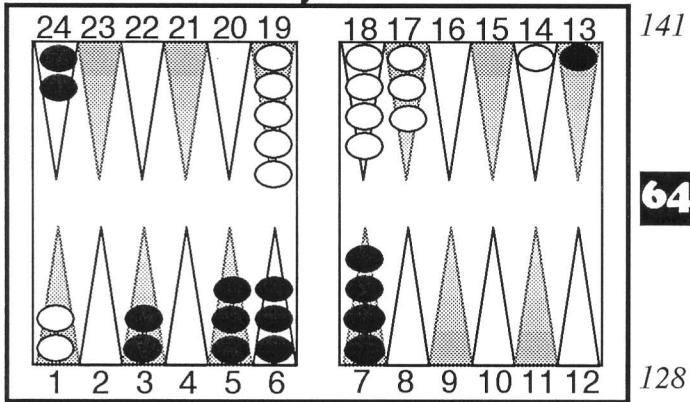
Answer to Position above: I (Jake) got this right when I took the quiz (I was second that year with 8 right, to **Hugh Sconyer's** perfect 10), but I wonder if I'd have found it over the board? The correct play is 6/3x, 6/4.

The quiz is presented with JBL permission for your enjoyment. They are available on the **Japanese Backgammon League** website at www.backgammon.gr.jp.

Hoosier Backgammon Club
Home Page: <http://www.hoosierbgclub.org>
E-Mail: indybg@comcast.net

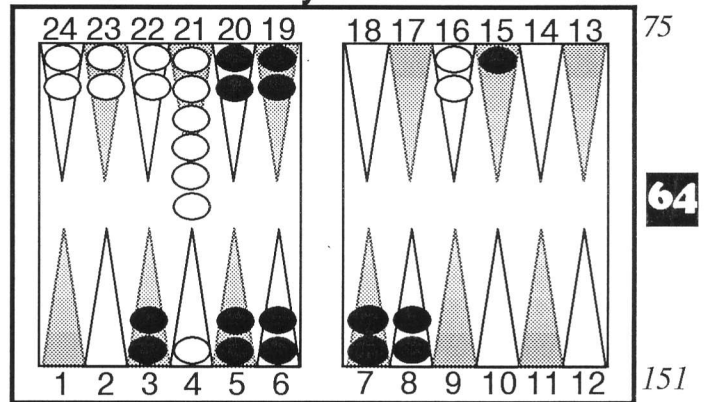
Butch & Mary Ann Meese
1008 Tuckahoe, Indianapolis, IN 46260-2215
(317) 255-8902

#1. Money Game.



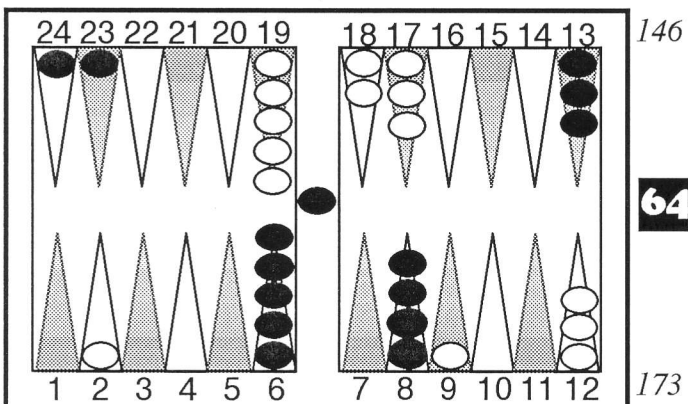
Black to Play 4-3?

#4. Money Game.



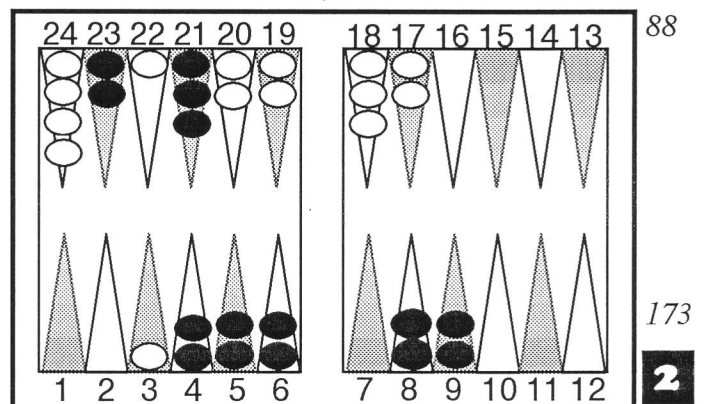
Black to Play 6-6?

#2. Match to 3, tied at 0.



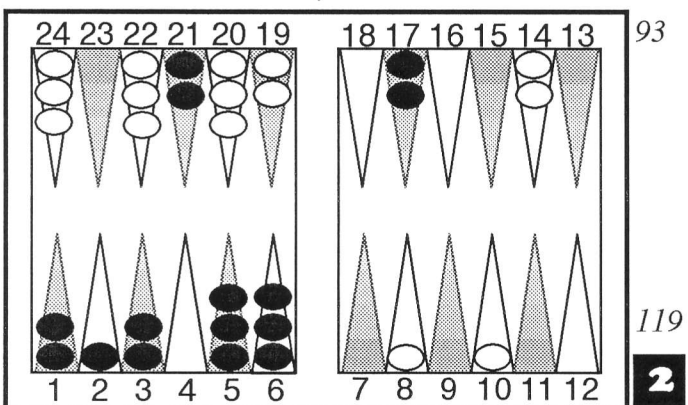
Black to Play 6-4?

#5. Match to 5, Black leads 3 to 1.



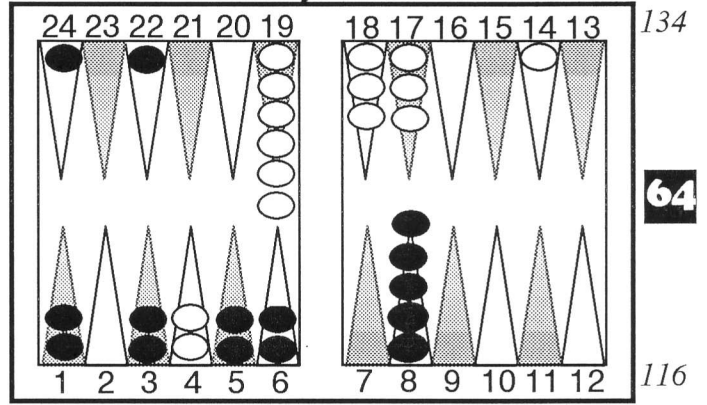
Black to Play 2-2?

#3. Match to 5, White leads 2 to 1.



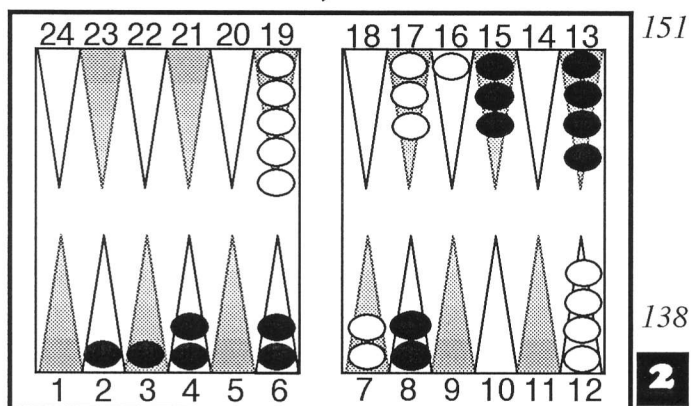
Black to Play 4-4?

#6. Money Game.



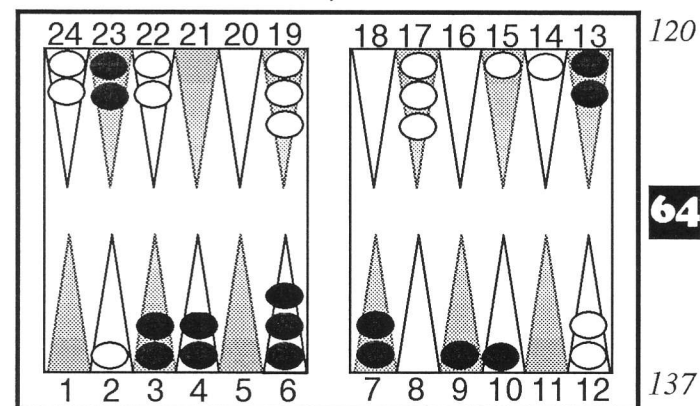
Black to Play 6-3?

#7. Match to 7, tied at 0.



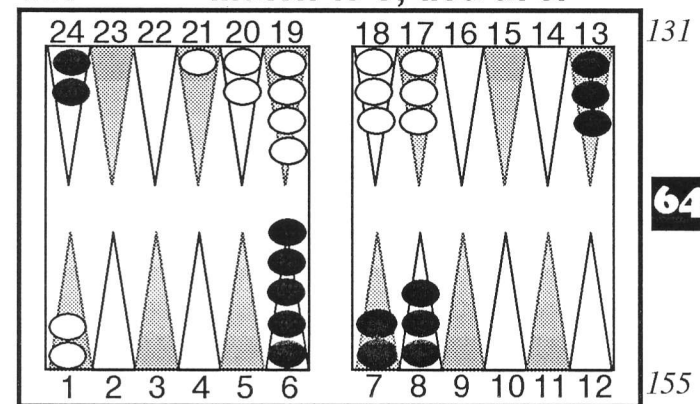
Black to Play 2-2?

#8. Match to 3, tied at 0.



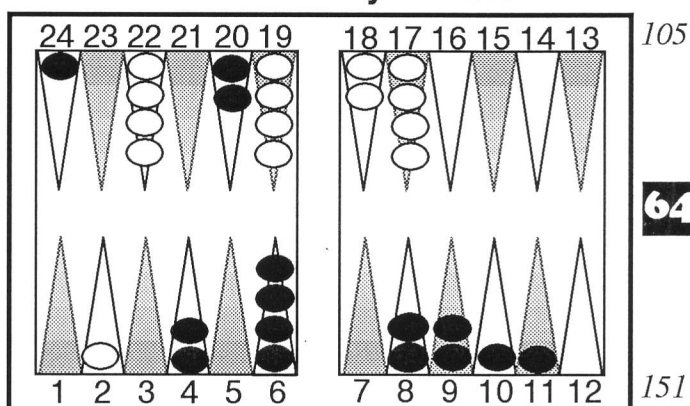
Black to Play 4-2?

#9. Match to 3, tied at 0.



Black to Play 5-1?

#10. Money Game.



Black to Play 2-2?

The answers to the quiz are on Page 4.
How good did you do?

	<u>January 8th</u>	<u>January 15th</u>
1st	Terry Bateman	Rick Steele
2nd	Larry Strommen	Scott Day
2nd	Sean Garber	Sean Garber
	<u>January 22nd</u>	<u>January 29th</u>
1st	Sean Garber	Gabe Stiasny
2nd	Chuck Stimming	Larry Strommen
2nd	Dan Moore	Rick Steele

HBC 2003 Gammon Standing
The **Player of the Month for January** was **Rick Steele** with 138 points.

1	Rick Steele.....	138
T2	Larry Strommen.....	136
T2	Sean Garber.....	136
4	Terry Bateman.....	78
5	Scott Day.....	77
6	Jim Curtis.....	58
T7	Gabe Stiasny.....	48
T7	Butch Meese.....	48
9	Chuck Stimming.....	44
10	Dan Moore.....	42
	Woody Woodworth.....	26
	Dave Groner.....	20
	Mary Ann Meese.....	18
	Josh Riddell.....	18

Feb 14-16..... **25th Pittsburgh Champs & ABT Awards**, Greentree Radisson, Pittsburgh, PA..... (412) 922-8400
 Feb 27-Mar 02.. **Southern Open**, Sleep Inn, Atlanta Ga.....(270) 333-1876
 Mar 21-23..... **20th Midwest Championships**, Wyndham Lisle Hotel, Lisle IL.....(773) 583-6464
 Wednesdays.. 7:00 PM at **Neon Johnny's**, 86th & Township Line Rd (Cellular 442-4065)..... HBC 255-8902

Problem #1

1. R 24/20 24/21	Eq: 0.630
1.0% 19.5% 66.8%	33.2% 10.3% 0.4%
2. R 24/21 13/9	Eq: 0.518 (-0.112)
1.2% 20.5% 62.1%	37.9% 10.5% 0.5%
3. R 24/21 7/3	Eq: 0.515 (-0.115)
1.1% 18.7% 62.7%	37.3% 10.3% 0.5%
4. R 24/20 13/10	Eq: 0.502 (-0.128)
1.3% 20.0% 61.5%	38.5% 11.2% 0.5%
5. R 24/20 7/4	Eq: 0.445 (-0.185)
1.3% 21.6% 61.2%	38.8% 13.0% 0.8%

Problem #2

1. R bar/21 8/2x	Eq: -0.735
0.3% 7.9% 34.5%	65.5% 17.1% 0.8%
2. R bar/15	Eq: -0.878 (-0.143)
0.3% 7.2% 33.2%	66.8% 19.2% 0.8%
3. R bar/21 13/7	Eq: -0.998 (-0.263)
0.2% 7.1% 31.9%	68.1% 20.3% 1.1%

Problem #3

1. R 21/13(2)	Eq: 0.300
0.1% 4.6% 43.4%	56.6% 3.8% 0.1%
2. R 17/13(2) 6/2 5/1	Eq: 0.220 (-0.080)
0.1% 4.3% 41.5%	58.5% 4.7% 0.2%
3. R 21/17 17/13(3)	Eq: 0.220 (-0.081)
0.3% 8.4% 41.3%	58.7% 6.8% 0.2%
4. R 21/13 17/13 6/2	Eq: 0.154 (-0.146)
0.5% 11.2% 40.0%	60.0% 13.0% 0.2%
5. R 21/9 6/2	Eq: 0.125 (-0.175)
0.2% 5.5% 38.9%	61.1% 8.9% 0.3%

Problem #4

1. R 20/14(2) 19/13(2)	Eq: 0.180
0.2% 3.3% 58.4%	41.6% 11.8% 0.1%
2. R 19/7(2)	Eq: 0.099 (-0.081)
0.3% 6.7% 54.7%	45.3% 9.2% 0.1%
3. R 20/8(2)	Eq: 0.075 (-0.104)
0.3% 6.6% 53.1%	46.9% 9.1% 0.1%
4. R 19/13(2) 8/2(2)	Eq: 0.039 (-0.141)
0.3% 6.7% 52.1%	47.9% 10.5% 0.1%
5. R 20/14(2) 8/2(2)	Eq: -0.011 (-0.190)
0.3% 6.0% 51.0%	49.0% 11.2% 0.2%

Problem #5

1. R 9/7(2) 5/3x(2)	Eq: -0.178
0.8% 14.7% 59.0%	41.0% 17.9% 0.9%
2. R 9/7(2) 8/6(2)	Eq: -0.253 (-0.075)
0.7% 12.9% 56.8%	43.2% 19.5% 0.8%
3. R 9/7(2) 7/3x	Eq: -0.278 (-0.100)
0.6% 13.3% 58.8%	41.2% 22.7% 1.4%
5. R 9/3x 8/6	Eq: -0.369 (-0.191)
0.7% 12.8% 55.6%	44.4% 24.1% 1.9%

Problem #6

1. R 24/21 22/16	Eq: 0.384
0.3% 7.7% 62.0%	38.0% 6.4% 0.3%
2. R 24/15	Eq: 0.309 (-0.075)
0.4% 10.3% 59.1%	40.9% 6.7% 0.3%
3. R 22/16 8/5	Eq: 0.268 (-0.116)
0.3% 9.3% 58.1%	41.9% 6.3% 0.3%
4. R 22/13	Eq: 0.146 (-0.238)
0.3% 9.1% 54.4%	45.6% 7.0% 0.3%
5. R 24/21 8/2	Eq: 0.001 (-0.383)
0.4% 11.5% 50.4%	49.6% 12.0% 0.6%

Problem #7

1. R 13/11(4)	Eq: 0.557
2. R 15/13 13/11(3)	Eq: 0.476 (-0.081)
3. R 13/9(2)	Eq: 0.461 (-0.096)
4. R 15/11 13/11 4/2	Eq: 0.422 (-0.135)
5. R 15/11 13/11 3/1	Eq: 0.420 (-0.137)

Problem #8

1. R 9/5 7/5	Eq: 0.102
0.9% 18.3% 51.8%	48.2% 12.4% 0.7%
2. R 10/8 6/2x	Eq: 0.023 (-0.080)
0.9% 18.3% 49.4%	50.6% 17.5% 1.0%
3. R 9/7 6/2x	Eq: 0.014 (-0.088)
1.0% 19.0% 49.1%	50.9% 14.0% 0.8%
4. R 6/2x 4/2	Eq: -0.005 (-0.107)
1.0% 20.0% 48.1%	51.9% 19.2% 1.2%
5. R 13/11 6/2x	Eq: -0.010 (-0.112)
1.1% 19.9% 49.1%	50.9% 21.4% 1.6%

Problem #9

1. R 13/8 6/5	Eq: -0.713
0.4% 8.9% 36.2%	63.8% 23.4% 1.4%
2. R 13/7	Eq: -0.855 (-0.143)
0.4% 7.9% 33.3%	66.7% 19.7% 1.0%
3. R 8/3 6/5	Eq: -0.913 (-0.200)
0.4% 8.4% 35.1%	64.9% 28.1% 2.0%
4. R 13/8 13/12	Eq: -0.946 (-0.234)
0.4% 8.0% 32.2%	67.8% 20.5% 1.2%
5. R 8/3 8/7	Eq: -1.000 (-0.287)
0.3% 6.5% 28.7%	71.3% 26.8% 1.8%

Problem #10

1. R 6/2x(2)	Eq: -0.020
0.4% 11.0% 50.1%	49.9% 13.7% 0.5%
2. R 9/7(2) 6/2x	Eq: -0.154 (-0.134)
0.3% 10.2% 48.3%	51.7% 18.9% 0.6%
3. R 9/5(2)	Eq: -0.168 (-0.149)
0.3% 8.2% 47.1%	52.9% 13.8% 0.4%
4. R 11/9 9/7(3)	Eq: -0.177 (-0.157)
0.4% 8.2% 46.7%	53.3% 13.4% 0.3%
5. R 11/9 9/7(2) 6/4	Eq: -0.224 (-0.205)
0.4% 8.2% 46.5%	53.5% 16.8% 0.5%

Congrats to **Frank Talbot** of Michigan who won this quiz and the Japan Open. He got 7 correct.