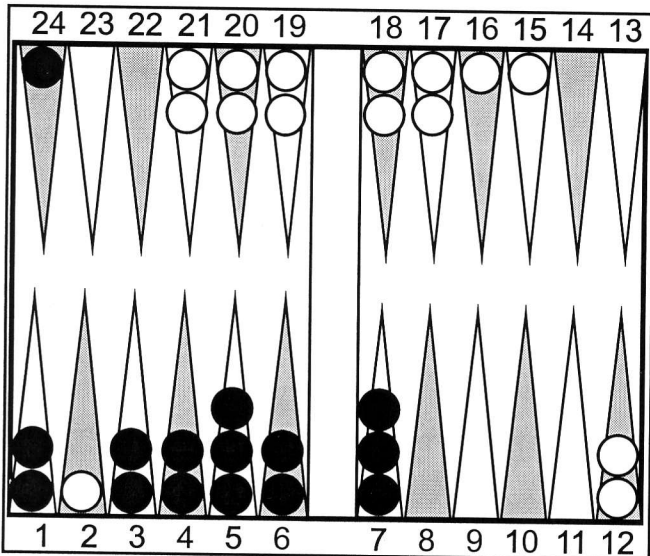




# Hoosier Backgammon Club

April 2005

With Whipping Cream And A Cherry!  
by Chuck Bower



Position One.

Score tied 6-6 in a 7-point match.  
Black to play 4-2?

On Kit Woolsey's **GammOnline** forum, we have a term which describes situations such as that shown in Position One: **Quiz Factor**. Often when you look at a position presented to you as a problem you are alerted to the fact that the obvious play is probably incorrect, else it wouldn't be a problem at all.

Over the board it is easy to get into the bad habit of making the first move that comes to mind. In the illustrated position, Black is losing the timing battle and 24/22 looks automatic. The continuation up appears to be 7/3, holding onto the five prime to block White's last checker.

Take a look at White's follow-up if Black plays the

obvious 24/22, 7/3. Aces, fours, and 2-2 close the prime; sixes escape the last checker. Double fives are great. 5-2 and 3-3 knock Black's back checker away from the edge of the prime. All but 5-3 and 3-2 do something good for White.

If you haven't seen the second candidate (no, it's not 24/22, 5/1), now's a good time to find it. 24/22 is a must, getting to the edge of the five-prime. 6/2x is the other half. White will fan 44% of the time giving Black the opportunity to put Humpty Dumpty back together again. If White stays on the bar, Black will get a few rolls to jump White's prime and scramble home for the victory.

Kent Goulding referred to this type of play -- giving up a good blocking structure to hit and leave two fresh home board blots -- as a **bananas split** (yes, there is an 's' at the end of bananas). He elaborated: *you must have gone bananas if you decided to make this split!* A GNU-backgammon rollout says Black wins 20% of games by making the unimaginative 7/3 play and a whopping 17% more (37% of all games) with the bananas split. Even at \$-play with Black owning the cube, the hitting play is hugely correct by nearly 0.4 cubeful equity units. Cubeless, the hit wins about 17% more total games but in addition picks up 16% more gammons than the safer looking plays while losing only 8% extra gammons.

The key here is to recognize that Black's game is at a critical juncture and making the passive move just plays into White's hands. Looking for an alternative move is always a good idea, especially when the right play seems obvious. Here that extra effort pays off with Black often getting his just desserts.

## 2004 Club Champion: Butch Meese

This special event consists of players who wins Player of the Month or finish in the year's Top Ten. This is the 15th year for this event and the first time Butch has won. The final match was against Rick Steele. Butch went up 9-3 in the 13-point match and later 12 Crawford to 4. The match went to double match point with Butch winning. Congratulations.

Hoosier Backgammon Club

Butch & Mary Ann Meese

1008 Tuckahoe, Indianapolis, In 46260-2215

Home Page: <http://www.hoosierbgclub.org>

Email: [indybg@comcast.net](mailto:indybg@comcast.net)

Phone: 317.255.8902

# HBCs Sunday Tournament

Sunday - June 5th, 2005

**Arni's Restaurant (875-7034)**

3443 West 86th Street (west of Walmart)

Registration: 12 Noon      Play Begins: 12:45 PM

Open Division: \$20 with \$10 Optional Sidepool

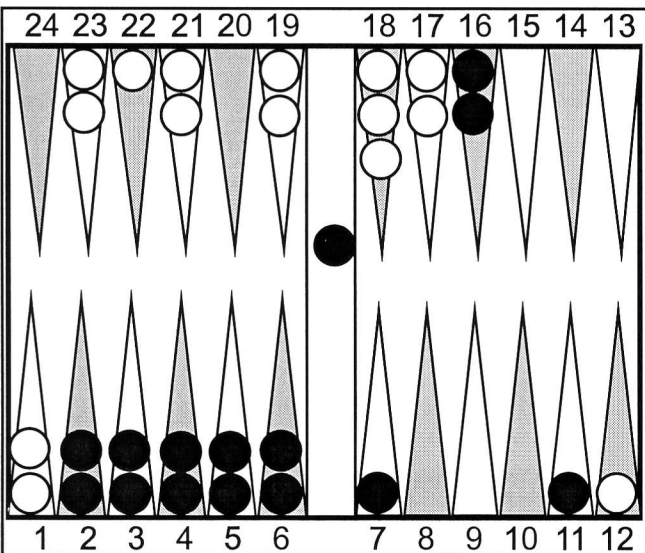
Limited Div: \$8

Format: Main-Consolation

## HBC Standings As of March 2005

Sean Garber	489
Butch Meese	422
Rick Steele	341
Scott Johnston	298
Larry Strommen	297
Chuck Stimming	284
Terry Bateman	244
Scott Day	126
Merle Feldman	115
Paul Berg	96
Jim Curtis	90
Woody Woodworth	76
Josh Riddell	69
Mary Ann Meese	64
Dave Groner	36
Dan Moore	34
Mark Swanson	32
Mark Mikolon	20
Eric Luecking	18
Charlie Haley	12
Derrick Swanson	10

Teaser Problem: Black on roll.



Cube action, both sides.

Situations

- 1) Money Game.
- 2) 7 Pt match, Black-1, White-1, cube centered.
- 3) 7 Pt match, Black-2, White-1, cube centered.
- 4) 7 Pt match, Black-1, White-1, cube at 2.
- 5) 7 Pt match, Black-2, White-1, cube at 2.

??

??

Answers in next's month newsletter.

## 53rd Indiana Open

**Labor Day Weekend 2005**

*Free Lecture by Joe Sylvester*

Player of the Month of March 2005 was Butch Meese with 238 gammon points.

	March 2	March 9	March 16	March 23	March 30
<b>1st</b>	Larry Strommen	Butch Meese	Butch Meese	Butch Meese	Sean Garber
<b>2nd</b>	Sean Garber	Scott Day	Dave Groner	Sean Garber	Butch Meese
<b>2nd</b>	...	Larry Strommen	Merle Feldman	Scott Johnston	...

### Tournament BG Schedule

Apr 27-May 1	Nevada State Tournament, Riviera, Las Vegas, Nevada	702.893.6025
May 27-30	26th Chicago Open, Oak Brook Hills, IL	847.674.0120
Jul 1-4	Michigan Summer Championships, Sheraton, Novi, MI	810.232.9731
Wed 7 PM	Neon Johnny's (86th & Township Rd)	(Cells) 317.442.4065 or 317.430.7862